

## LOCKING CYLINDER SOLUTIONS

### Tigris® X-AKT high security cylinder

- Long life patent to 2037
- EN 1303:2015 compliant
- Active key technology
- Steel barrel and body pins
- Drill protection in cylinder barrel and body
- Anti-pick pins
- Anti-bump



Mobile Key Element

# ACCESS2

SECURITY | CONTROL | ACCESS



STUDENT ACCOMMODATION

ASSISTED LIVING

MEDICAL CENTRE

SCHOOL ADMIN BLOCK

OFFICE COMPLEX

COMMUNITY CENTRE

ELECTRICAL SUB-STATION

## The UK's no.1 choice for cylinder systems, specified throughout the world.

24 HOUR GYM

CITY CENTRE APARTMENT


The vast majority of doors in use today are controlled and secured using mechanical locking cylinders and keys. TIGRIS® is the UK's leading brand of locking cylinders, with an extensive range to accommodate most requirements and the ability to cater for varying levels of security, TIGRIS® locking cylinders are the industry's trusted solution.

Whether you are looking for cylinders for a residential development or a complex masterkeyed solution for a multi-site hospital or university, specifying a TIGRIS® cylinder system carries the reassurance that comes with a product which has been successfully specified and installed on thousands of projects across the UK, Middle East and Far East.

Integral to the **Access 2** solution is an unrivalled level of service and our 'can do' approach to special options like our **Colourmatch** service which gives you ultimate choice on colour and finish across our cylinder ranges.

**Access 2** is an ISO 9001 registered company, member of the GAI and MLA and an executive member of the DHF.





Providing security and safety for people and the places they go.

#### Why do we need different systems?

To generalise, all cylinders perform the same basic task but the details of their design and construction provide a range of additional features and benefits designed to increase physical security, provide greater flexibility or convenience to the system users, or to protect vulnerable individuals' life safety.

#### Attack Resistance

An essential element of any cylinder system is to protect against unauthorised access in the form of forced entry by both brute force attack or manipulation. All TIGRIS® cylinders are tested to multiple industry standards using agreed sets of tools and test methods to determine the product durability and resistance to attack.

#### Key Security & Patents

There is a choice to be made between the convenience of being able to get keys duplicated easily and the security of knowing that keys cannot be copied by an unauthorised source. The only systems capable of protecting against such unauthorised key duplication are those which are protected by a valid Patent.

For more information on the significance of patent protection and how it can affect commercial insurance claims visit our website at:

[www.access2.com](http://www.access2.com)

### OPTIONAL FEATURES

A number of additional features are available as options within the Tigris® ranges of cylinder. These include:



**Clutch Function** - When inserted the key disengages the thumb turn operation, and has priority over locking and unlocking. Often required in facilities for vulnerable people, it prevents a door being held locked by gripping the thumb turn on the inside.



**Classroom Function** - A variant of the clutch function. The key operation remains the same, however the thumb turn can only be used to unlock the door.



**Construction Cylinder** - Allows contractors to install and use the cylinder during the construction phase using a Construction Key. Once a valid system key is used, the internal pinning arrangement alters to negate and prevent any future use of the Construction Keys.



**Thumbturns** - We offer a range of thumbturns to suit different hardware ranges, aesthetics or for Special Needs requirements. (See page 25 for more information).



**Finishes** - An unrivalled number of finishes are offered through our **Colourmatch** service. As well as 10 standard finishes we are able to colour match any hardware finish you wish to specify. (See page 17 for more information).

For more information on Optional Features see page 24.

### Meeting Standards

Tigris® cylinders are tested and certified to EN 1303:2015 and TS007. Both standards form the benchmark for cylinder security in the UK.

#### EN 1303:2015

Classifies cylinders according to a set of tests to determine fire safety, resistance to attack, durability and key security among other things. It results in an 8 digit code which can be used to cross compare cylinder ranges.

### Technical Specification 007:2014 + A2:2018 (including corrigendum No.2)

Produced by the DHF to provide a standard for replacement cylinders comparable to that of PAS24 and BS3621. Products should be tested, audited and assessed by an independent 3rd party such as BSI and those conforming are able to use the coveted BSI Kitemark. 3 Star Kitemarked cylinders are becoming an essential component of choice for secure doorsets (such as PAS24 doorsets). Easily accessible doorsets are classed as a “**secure doorset**” and are a requirement for dwellings in the UK under Approved Document Q of Building Regulations..

For more information go to:  
[www.dhfonline.org.uk](http://www.dhfonline.org.uk)



# TIGRIS® X-AKT®

## Active Key Technology

A patent protected cylinder system which uses a unique interactive moveable element in the key and the cylinder body. This feature makes it virtually impossible to reproduce even with the most current 3D printing techniques. It represents our highest level of key protection.

### Features

- ◆ Long life patent to 2037
- ◆ EN 1303:2015 compliant
- ◆ Active key technology
- ◆ Steel barrel and body pins
- ◆ Drill protection in cylinder barrel and body
- ◆ Anti-pick pins
- ◆ Anti-bump as standard
- ◆ Strict control of key blanks held securely at Access2
- ◆ Multi profile key family
- ◆ Suitable for large and complex masterkeying
- ◆ 36,000 differs under master key
- ◆ Traditional and Key Control master keying systems
- ◆ Accredited to EN 15804
- ◆ Full range of optional feature
- ◆ Full range of Colourmatch finishes



EN 1303 Classification	Durability	Key Security	Attack Resistance
1 6 0 B 0 C 6 B/C/D	6	6	B/C/D



### Cylinder Types

The following cylinder types are available in the X-AKT range:

- Euro profile single
- Euro profile double including offsets
- Euro profile double with thumbturn including offsets
- UK Oval
- Scandinavian Oval
- Rim & Rim mortice
- Cam lock
- CEN3/4/5/6 padlocks



A selection of popular sizes is shown on pages 20-23. Further information is available at: [www.access2.com/tigris](http://www.access2.com/tigris)

### Applications

Tigris® X-AKT cylinders are ideally suited to applications such as research facilities, banking or defense, where unauthorised copying of keys must be prevented.



### Protected by long life patent

A long life patent to 2037 combining a patent protected key profile, and patent protected interactive element located within the key AND the cylinder body prevents illicit duplication.

The interactive mobile key element activates a side pin in the cylinder so that even a key with the correct key profile and key bitting will not operate the cylinder.

See the Tigris® X-AKT® key in action at: [www.access2.com/range/tigris-x-akt](http://www.access2.com/range/tigris-x-akt)



# TIGRIS® Premier3

## Protected key duplication

Tigris® Premier 3 is a high security patent protected cylinder system. Keys are specially produced with a unique undercut 'branch groove' which provides a physical and legal barrier to unauthorised key duplication. Strict control of keys which can only be supplied by Access2 to authorised persons.

## Features

- ◆ Patented system up to 2032
- ◆ Available as 1 and 3 Star cylinders to TS007 (see page 14))
- ◆ 6 pin system
- ◆ Anti-pick pins
- ◆ Drill protection in cylinder body and core
- ◆ Scalable masterkeying with up to 36,000 differs on a single system
- ◆ A full range of additional functions available to order
- ◆ Wide range of cylinder types available
- ◆ Full range of Colourmatch finishes



EN 1303 Classification	Durability	Key Security	Attack Resistance
1 6 0 B 0 C 6 B/C/D	6	6	B/C/D



## Cylinder Types

Premier 3 includes an extensive range of cylinders with no omissions. The following are some of the more popular available in the range:

- Euro profile single
- Euro profile double including offsets
- Euro profile double with thumbturn including offsets
- UK Oval
- Scandinavian Oval
- Rim mortice
- Cam lock
- CEN3/4/5/6 padlocks



A selection of popular sizes is shown on pages 20-23. Further information is available at: [www.access2.com/tigris](http://www.access2.com/tigris)



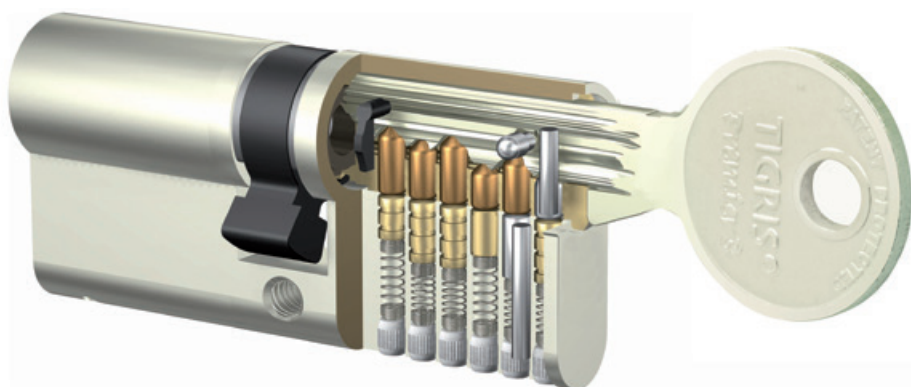
### Applications

With strict control over key duplication and complex masterkeying options, Premier 3 cylinders are ideally suited to use in medium to large buildings in the health and education sectors for example.



### TS007 Cylinders

Tigris® Premier 3 is available in a wide range of formats, from a standard cylinder through to 1 and 3 star cylinders to TS007 (see page 14).



# TIGRIS® Plus

## Open profile system

Tigris® Plus offers the same extensive range of locking cylinders as Tigris Premier3, provided on an open profile system where keys are freely available allowing unrestricted local key cutting services. Whilst this is less secure than a patent protected key system, it provides a system level which is suitable for a wide range of applications where key convenience takes priority over system security.

## Features

- ◆ Unrestricted key blanks
- ◆ 6 pin system
- ◆ Resistant to picking & drilling
- ◆ Bump resistant feature available as an option
- ◆ Meets the highest standard of security to EN 1303;2015
- ◆ Capable of simple masterkeying up to 1,200 differs under a single masterkey
- ◆ A range of additional functions available to order
- ◆ Wide range of cylinder types and sizes
- ◆ Choice of optional thumbturns
- ◆ Full range of Colourmatch finishes



EN 1303 Classification	Durability	Key Security	Attack Resistance
1 6 0 B 0 C 6 B/C/D	6	6	B/C/D



### Applications

With local key cutting and a wide range of cylinder types available, Tigris® Plus cylinders are ideally suited to those applications where it is desirable to allow key holders to source their own duplicate and replacement keys.



### Cylinder Types

Tigris Plus features an extensive range of cylinder types. The following are some of the more popular available in the range:

- Euro profile single
- Euro profile double including offsets
- Euro profile double with thumbturn including offsets
- UK Oval
- Scandinavian Oval
- Rim mortice
- Cam lock
- CEN3/4/5/6 padlocks

A selection of popular sizes is shown on pages 20-23. Further information is available at: [www.access2.com/tigris](http://www.access2.com/tigris)



# TIGRIS® standard

## Open profile system

Key blanks for the Tigris® Standard system are freely available allowing local key cutting. Whilst this is less secure than a protected key blank it provides a level of convenience in a 6 pin cylinder which still provides high levels of resistance to attack.

## Features

- ◆ Unrestricted key blanks
- ◆ 6 pin system
- ◆ Pick resistant pins as standard
- ◆ Meets the highest standard of security to EN 1303;2015
- ◆ Capable of simple masterkeying up to 1,200 differs under a single masterkey
- ◆ Wide range of cylinder types and sizes
- ◆ Choice of optional thumbturns
- ◆ Basic selection of Colourmatch finishes



EN 1303 Classification	Durability	Key Security	Attack Resistance
1 6 0 B 0 C 6 B	6	6	B



### Applications

Tigris® Standard – an entry level product that provides a moderate level of security with the convenience of local key duplication, making it particularly suited to applications where key holders are required to source their own replacement and duplicate keys.



### Cylinder Types

The following cylinder types are available in the Tigris® Plus range:

- Euro profile single
- Euro profile double including offsets
- Euro profile double with thumbturn including offsets
- Scandinavian Oval
- Rim mortice
- Cam lock
- CEN3/4/5/6 padlocks

A selection of popular sizes is shown on pages 20-23. Further information is available at: [www.access2.com/tigris](http://www.access2.com/tigris)



# TIGRIS® KITEMARKED CYLINDERS



## Kitemarked Cylinders

A high security patent protected cylinder system which is certified to TS007:2016 with 1 star and 3 star options. The certification ensures these kitemarked cylinders are suitable for use on PAS 24 doorsets, a mandatory requirement for all residential applications.

**Choose either Patent Protected or Non-Patent Protected cylinders.**

## Features

- ◆ Patented system up to 2032
- ◆ Non-Patented system option
- ◆ Available as 1 and 3 Star cylinders (state when ordering)
- ◆ 1 Star bump resistant
- ◆ 3 Star bump resistant + Snap Secure
- ◆ Suitable for use on PAS 24 doorsets
- ◆ 6 pin system
- ◆ Anti-bump pins
- ◆ Anti-pick pins
- ◆ Drill protection in cylinder body and core
- ◆ Masterkeying options available
- ◆ Full range of additional functions available to order
- ◆ Full range of Colourmatch finishes



EN 1303 Classification	Durability	Key Security	Attack Resistance
1 6 0 B 0 C 6 B/C/D	6	6	B/C/D



## Cylinder Types

The following cylinder options are available either as Patent Protected or Non-Patent Protected. This gives you the option of restricted key duplication or the convenience of key duplicates, but with the same physical attack resistance:

**1 Star Kitemarked cylinders**

**3 Star Kitemarked cylinders**

**Euro profile double including offsets**

**Euro profile double with thumbturn including offsets**



A selection of popular sizes is shown on pages 20-23. Further information is available at: [www.access2.com/tigris](http://www.access2.com/tigris)

## Applications

Cylinders certified to TS007:2016 are mandatory for use in new residential developments in the UK. The high attack resistance also makes them a perfect choice for use in other areas which may be liable to forced entry.



## TS007 Cylinders

Technical Specification 007 produced by DHF for new and replacement cylinders, provides a security level comparable to that of PAS24 and BS3621. Cylinders should be tested, audited and assessed by an independent 3rd party such as BSI and those conforming are able to use the coveted BSI Kitemark. 3 Star Kitemarked are becoming an essential component of choice for security doorsets such as those tested to PAS24.

TS007 cylinders are required to attain a significant minimum classification (EN1303:2015), resist a series of brute force physical attacks (PAS24) and a number of expert manipulation tests (BS3621:2017 Annex A Clause A5 and A6).



“Live your life in full Colour”

Satin stainless steel used to be the finish of choice for most commercial, public and even residential developments, but things are changing. Modern high quality residential developments are just as likely to use dark bronze or satin brass to inject a feeling of quality and individuality.

All Tigris® cylinders are available in standard nickel finish. We provide a standard range of special finishes, bronzes, polished chrome and satin brass, available on Premier 3 and Plus. We can provide cylinders in a wide range of metallic and solid colours. Finishes are carefully applied, either by powder coating, electrophoretic lacquering, electroplating and metal polishing or linishing to guarantee an extremely high level finish making the cylinder more robust and resilient to key damage.

Our ColourMatch service provides the facility to match cylinders to a desired finish. It allows specifiers to provide a project wide unrivalled range of colours and finishes ..... *your choice of finish not ours.*





Tigris® Premier 3 cylinder supplied in a mid bronze finish (ref:44) to match this high quality lever furniture.



Tigris® cylinder in dark bronze 47.



Tigris® cylinder in satin nickel 02.



Tigris® cylinder in satin brass 04.

Standard Finishes (please ask to see samples prior to ordering)



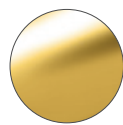
ref: 02  
Satin nickel



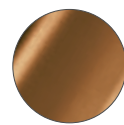
ref: 11  
Polished chrome



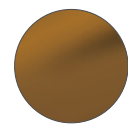
ref: 20  
Polished brass



ref: 04  
Satin brass



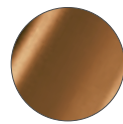
ref: 44  
Mid bronze



ref: 46  
Antique bronze



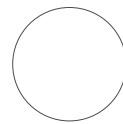
ref: 47  
Dark bronze



ref: C34  
Simulated bronze



ref: 50  
Matt black



ref: 51  
Matt white

### MASTERKEY SYSTEM ARCHITECTURE

Access2 manufactures thousands of masterkey systems every year. Each one is a bespoke build, from a simple residential apartment block, to a large complex multi profile system for a hospital site or university campus.

Although the details may vary according to the size of building or complexity of the organisation, the fundamental function of any masterkey system is to allow a keyholder only through door(s) that match their access requirements. Historically this has been achieved by grouping doors into zones and blocks, which in turn fall under sub master, master and grand master key groups. Whilst in theory this works, staff often need access to doors in multiple zones. Often for sake of convenience staff will be given a single key in the form of a sub-master or master key. However this results in staff having access to multiple areas outside of their access permissions resulting in a substantial increase in system risk and a significant reduction in system security. If a system masterkey is lost, the security of a key system is completely compromised. Therefore the widespread use of sub-master and master keys should be avoided at all costs.

At Access2 we take a more modern pragmatic approach. Rather than grouping doors and buildings, we first group together users with the same access requirements. We then match individual doors to each user group's access need. This is often referred to as a Key Control System or Central Locking System. These systems reflect the access needs of



the building users, the architecture is easier to understand, system administration is less complex and with fewer keys required, cost savings at the initial procurement stage and throughout the life of the system can be realised.

This modern approach to key control systems can be integrated with electronic access credentials. This introduces a higher level of control on certain strategic doors, gates or barriers using electronic locking to control not only who has access but on what days/times as well as being able to monitor who has been where and when.

For more information on Key Control Systems and dual credential security go to:

[www.access2.com/considering-master-key-system-design](http://www.access2.com/considering-master-key-system-design)

### QUEEN ELIZABETH HOSPITAL

The Healthcare sector provides a number of significant challenges when it comes to masterkey solutions. Fortunately, the extent of our experience allows us to design systems to cope with and adapt to these demands.

A prime example of this is the solution we developed for The QE Hospital in Birmingham.



### LISBOA PALACE

This complex leisure development comprising three luxury hotels, retail space, restaurants and entertainment facilities demanded several unique high end special finishes along with a cylinder system that could deliver multi profile Patented Key Security. Tigris Premier3 cylinders were able to accommodate these challenging requirements with ease.



### ATTENTION TO DETAIL

Our attention to every aspect of design, specification, manufacturing and supply of your Tigris® system includes a number of standard or optional benefits for the specifier or installer, including:

#### Packaging

Our foolproof method of packaging uses clear polyethylene pockets which makes installation quicker and less complicated. Each pocket contains the cylinder, keys and cylinder screw and is marked with the door number linked to the building plans.



#### Key tagging

Tags will contain the key number and one line of free text that can be used to describe the door that the key operates and/or the function of the key.



#### Customer logos

Using our 'state of the art' laser equipment we are able to professionally reproduce the most intricate custom logos on keys. It could be your logo or even that of the end user.



#### Laser etching

In order to eliminate the frustration when masterkeyed cylinders are installed in the wrong door, all of our masterkeyed cylinders are now laser etched with the door number linked to the building plans as standard.



### SERVICE SECOND TO NONE

In 2020 Access2 pioneered the introduction of a 48 hour lead time for “**build to order**” masterkey systems and with that, the previous industry lead time of 8 weeks was shattered overnight. Since then Access2 has made service an obsession and a priority. Customer focus is central to every decision change and improvement that we make, that’s why if you mention the Access2 name to those in the industry, they’ll mention our unbeatable service.

Additional cylinders are usually constructed and available within 24 hours, additional *extra to contract* keys are produced on a same day service.

At Access2 we understand the construction project process and time pressures involved. Cylinder locking systems are often one of the final elements to be installed, usually as a project nears its completion. We are able to draw from years of experience, operating where deadlines are tight and must be achieved.



Careful labelling of cylinders helps to eliminate many of the issues associated with incorrect installation. Just one of the details that makes Tigris® stand out from the rest.


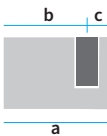
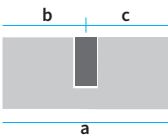
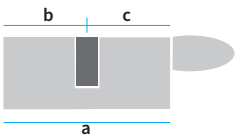
SELECTING YOUR CYLINDERS


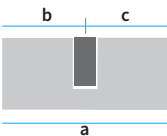
All our Tigris® Euro profile cylinders are manufactured in 5mm length increments. We have a large range of sizes available immediately from stock.

The table below shows a selection of the most common types and sizes. Please contact us for any cylinder length or design not shown or check our website for individual product data sheets. Cylinder lengths beyond 60/60 are available in 5mm increments.

CYLINDER LENGTHS

Cylinders are selected to suit a combination of the door thickness, the hardware being used and the position of the lock case within the door. Please refer to the guidance on page 22 for details.

SINGLE & EQUAL CYLINDERS	Cylinder Type	Single Cylinder								Double Cylinder								Double Cylinder with Thumbturn							
		Euro Profile																							
	Cylinder Ref:	ES40	ES45	ES50	ES55	ES60	ES65	ES70	ES75	ED3030	ED3535	ED4040	ED4545	ED5050	ED5555	ED6060	EK3030T	EK3535T	EK4040T	EK4545T	EK5050T	EK5555T	EK6060T		
	Dimensions (a - b/c)	40 (30/10)	45 (35/10)	50 (40/10)	55 (45/10)	60 (50/10)	65 (55/10)	70 (60/10)	75 (65/10)	60 (30/30)	70 (35/35)	80 (40/40)	90 (45/45)	100 (50/50)	110 (55/55)	120 (60/60)	60 (30/30)	70 (35/35)	80 (40/40)	90 (45/45)	100 (50/50)	110 (55/55)	120 (60/60)		
	Tigris X-AKT	■	■	■	■	■	■	■	■	■	■	■	■	■	■	■	■	■	■	■	■	■	■		
	Tigris Premier 3	■	■	■	■	■	■	■	■	■	■	■	■	■	■	■	■	■	■	■	■	■	■		
	Tigris Plus	■	■	■	■	■	■	■	■	■	■	■	■	■	■	■	■	■	■	■	■	■	■		
	Tigris Standard	■	■	■	■	■	■	■	■	■	■	■	■	■	■	■	■	■	■	■	■	■	■		

OFFSET CYLINDERS	Cylinder Type	Double Cylinder																				
		Euro Profile																				
	Cylinder Ref:	ED3035	ED3040	ED3045	ED3050	ED3055	ED3060	ED3540	ED3545	ED3550	ED3555	ED3560	ED4045	ED4050	ED4055	ED4060	ED4550	ED4555	ED4560	ED5055	ED5060	ED5560
	Dimensions (a - b/c)	65 (30/35)	70 (30/40)	75 (30/45)	80 (30/50)	85 (30/55)	90 (30/60)	70 (35/40)	80 (35/45)	85 (35/50)	90 (35/55)	95 (35/60)	85 (40/45)	90 (40/50)	95 (40/55)	100 (40/60)	95 (45/50)	100 (45/55)	105 (45/60)	105 (50/55)	110 (50/60)	115 (55/60)
	Tigris X-AKT	■	■	■	■	■	■	■	■	■	■	■	■	■	■	■	■	■	■	■	■	■
	Tigris Premier 3	■	■	■	■	■	■	■	■	■	■	■	■	■	■	■	■	■	■	■	■	■
	Tigris Plus	■	■	■	■	■	■	■	■	■	■	■	■	■	■	■	■	■	■	■	■	■
	Tigris Standard	■	■	■	■	■	■	■	■	■	■	■	■	■	■	■	■	■	■	■	■	■





**CALCULATING THE CORRECT CYLINDER LENGTH**

For Euro profile and oval profile cylinders it is important to specify the correct cylinder length. Not only is it more visually appealing, but by making sure the cylinder does not project too far from the escutcheon or plate makes the cylinder less vulnerable to attack, particularly from snapping.

Three factors should be considered:

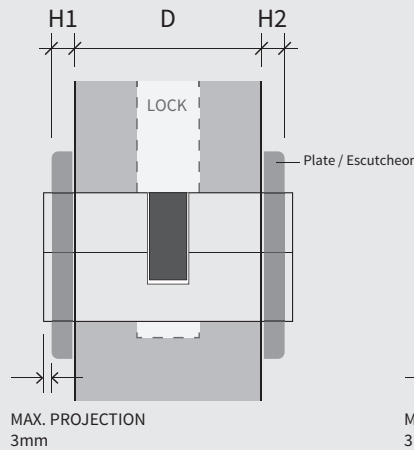
- ◆ Thickness of the door
- ◆ Thickness of the hardware (backplate or escutcheon)
- ◆ The position of the lock within the door thickness

**INSTALLATION**

All our Tigris® cylinders are supplied with detailed installation and maintenance instructions. These are also available to download, together with declarations of conformity from our website at:

[www.access2.com](http://www.access2.com)

**Locks fitted centrally**

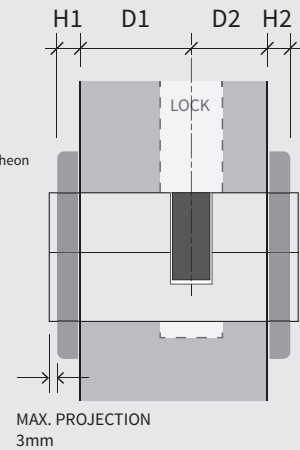


**Example:**

$$54(D) + 10(H1) + 10(H2) = 74\text{mm}$$

Use 40/40 cylinder = 80mm  
(3mm projection each side)

**Locks fitted offcentre**



**Example:**

$$38 + 5(D1 + H1) + 28 + 5(D2 + H2) = 76\text{mm}$$

Use 45/35 cylinder = 80mm  
(2mm projection each side)

**UNDERSTANDING PRODUCT CODES AND HOW TO BUILD THEM**

SYSTEM	FORMAT	BODY TYPE	BODY SIZE External	BODY SIZE Internal	FINISH	OPTIONS - TURNS	OPTIONS - FUNCTIONS
TS	MA - Masterkeyed	ES - Euro single	30	30	02 - Satin nickel	LAT - Large architectural turn	CL - Clutch fctn
TP	MS - Masterkeyed (Tigris +)	ED - Euro double	35	35	11 - Pol. chrome	AOT - Architectural oval turn	CR - Classroom fctn
TP3	3S - 3 Star	EKT - Euro key/turn	40	40	20 - Pol. brass	TOT - Traditional oval turn	CON - Construction keyed
TO	3S MA - 3 Star Masterkeyed	RC - Rim cylinder	45	45	04 - Satin brass	ALT - Anti-ligature turn	WC - Coin slot feature
TX	SA - Subassembled	RM - Rim mortice	50	50	45 - Light bronze	SNT - Accessible turn (full & mini)	
TPE		SK1 - Scandinavian external	55	55	44 - Mid bronze		
TPE3		SK3 - Scandinavian internal	60	60	47 - Dark bronze		
TR		OS - UK oval single	...	...	46 - Antique bronze		
		OD - UK oval double			50 - Black		
		OKT - UK oval key/turn			05 - White		
		ESK - Euro single turn					
		EKK - Euro double turn					
TP3	MA	ED	35	35	02	LAT	CL

OTHER CYLINDER TYPES

We have a variety of cylinder types and variations available for each cylinder range.

Image ref:	1/2	3	4	5/6	6	7	8	9	10	11	12	13	14	15/16
	UK OVAL	SCANDINAVIAN OVAL	RIM CYLINDER	RIM MORTICE CYLINDER	STANDARD CAM	UNION CAM	YALE CAM	EXTENDED RIM MORTICE CYLINDER	BLIND EURO PROFILE	COG CAM EURO PROFILE	WC EURO PROFILE	CAM LOCK	PADLOCK RANGE	VAN LOCK
Tigris X-AKT	■	■	■	■	■	■	■	■	■	■		■	■	■
Tigris Premier 3	■	■	■	■	■	■	■	■	■	■	■	■	■	■
Tigris Plus	■	■	■	■	■	■	■	■	■	■		■	■	■
Tigris Standard	■	■	■	■	■	■	■	■	■		■	■	■	■





### OPTIONAL FEATURES

A number of additional features are available as options within the Tigris® ranges of cylinder. These include:

**Clutch Function** - Often required in facilities for vulnerable people. A special clutch assembly inside the cylinder between the inside and outside cores prevents a door from being held locked by gripping the thumbturn on the inside. The key will always override the thumbturn.

**Classroom Function** - A variant of the clutch function, it only allows the thumbturn to unlock the door but not lock it. It prevents doors from being locked on the inside but ensures also that no one can be locked in accidentally. It is particularly useful in schools on classroom and store room doors.



**Construction Cylinder** - This special cylinder pinning arrangement allows contractors to install doors and use the cylinder during the construction phase to provide security. On completion of the construction the user keys can be issued to the building owner or occupier. On the first insertion of the masterkeys into each cylinder the internal pinning is permanently altered and this prevents any future use of the construction keys which can be disposed of.

**Thumbturns** - We offer a wide range of alternative thumbturns to suit different hardware ranges or for Special Needs accessibility. (See page 25 for more information)

**Finishes** - In addition to our standard Nickel finish, Tigris cylinders are available from a range of special metallic finishes. We are also able to provide a wide range of solid or metallic colours through our **Colourmatch** service. (See pages 16-17 for more information).







**THUMBTURN OPTIONS**

Cylinders with thumbturns are supplied as standard with our smooth and easy to operate elliptical thumbturn (above). We also offer a range of optional thumbturns which may suit particular door hardware ranges.

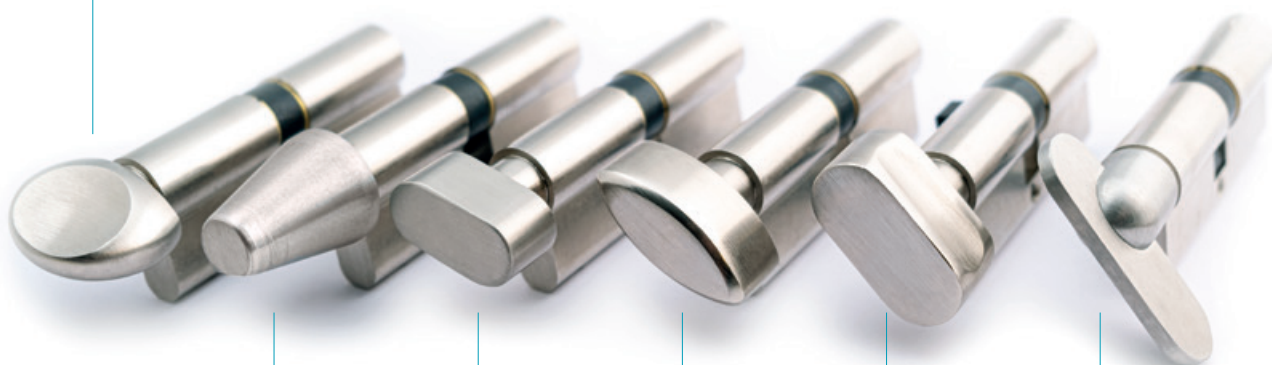
Included in the thumbturn options is our Accessible Turn, available in 2 sizes. The accessible turns are designed for maximum leverage to assist people with limited control or strength in their hands and fingers.

**Specification Note:**

1. Accessible Turns are not recommended for use on cylinders with Classroom Function.
2. Because of the extra 'operating circle' of the Accessible Turns they are not suitable for all lock cases. Care should be taken to determine that the lock centres and backset are sufficient to allow the turn to operate without clashing with the lever or door frame.



Elliptical Turn (as standard)



Anti-ligature\*\*  
Specify ALT

Traditional oval  
Specify TOT

Architectural oval  
Specify AOT

Large Architectural  
Specify LAT

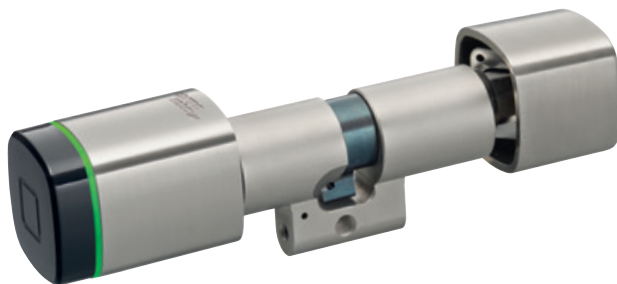
Accessible Turn  
Specify SNT or SNT MINI (shown)



We also offer a full programme of electronic access control systems.

#### ELECTRONIC ACCESS

Access2 also provide a wide range of electronic access solutions for schools, universities and the hotel and leisure industry. Advances in wireless technology and battery technology have led to electronic solutions being more viable than ever before, for all sizes of application. Whether you simply need to control a single entrance door on an office suite, to run a boutique hotel or for an entire university campus, we have systems which can cater for such flexibility.



Electronic cylinder from our Tigris® Electronic range is ideally suited to commercial applications.



**Confidant** low energy Bluetooth lock is compatible with third party mortice lock cases.



c-Lever, one of our commercial solutions can be programmed by card or using Matrix One software.



Dormakaba Mobile access solution using a Confidant Bluetooth low energy lock.

### A Range of Control Options

Locking and unlocking individual doors can be done by a whole host of alternatives including card, token, your smart phone or just a touch. Doors can even be locked and unlocked remotely, providing an unrivalled level of security and convenience.

Our systems are capable of being programmed and administered by a variety of means from a simple card based approach which requires no software up to a fully loaded system controlled and monitored from your PC, laptop or Smart Phone. You can set up and administer access rights in real time giving you instant control of security night and day wherever you happen to be in the world.

For full information on all our electronic access solutions go to:

[www.access2.com/etigris](http://www.access2.com/etigris)



One of our wireless M Series Smart Locks offering dual credential security with finger print and PIN access.

# ACCESS2



[www.access2.com](http://www.access2.com)

UNIT 35 NORTH TYNE INDUSTRIAL ESTATE,  
LONGBENTON, NEWCASTLE UPON TYNE, NE12 9SZ  
T: 0191 215 0530 F: 0191 215 1314  
E: [sales@access2.com](mailto:sales@access2.com) W: [access2.com](http://access2.com)